

Transform your Member Experience with
eMACH.ai
Digital Engagement Platform

Intuitive User Experience
Unified Personalised Cloud Events
Events MICROSERVICES
AI Unified AI Events Personalised
Cloud Headless API Intuitive User Experience
Personalised AI

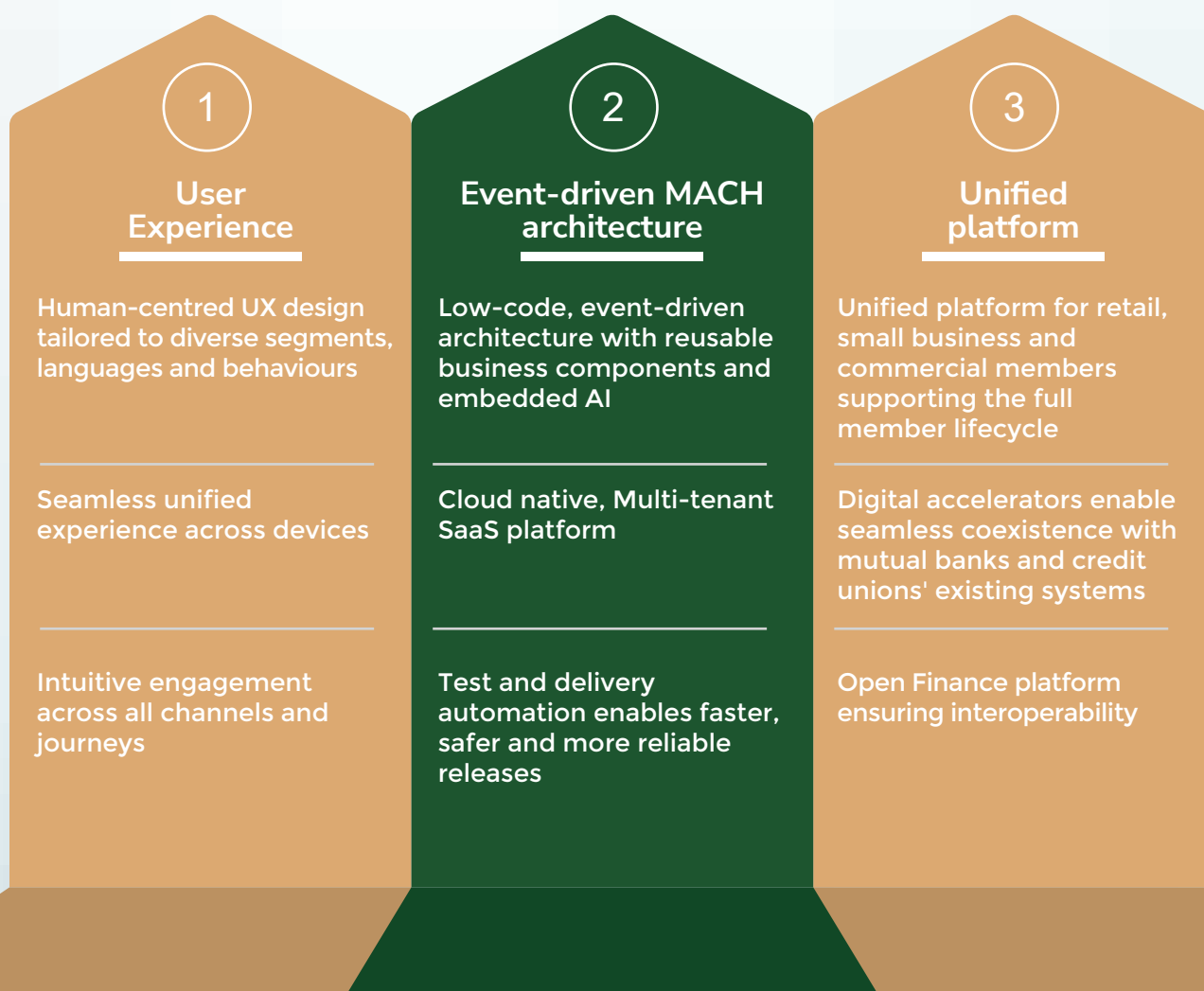


Trusted by over 140 credit unions, the eMACH.ai Digital Engagement Platform (DEP) is built on three robust pillars: User experience, event-driven MACH architecture and a unified platform for retail, small business and commercial members.

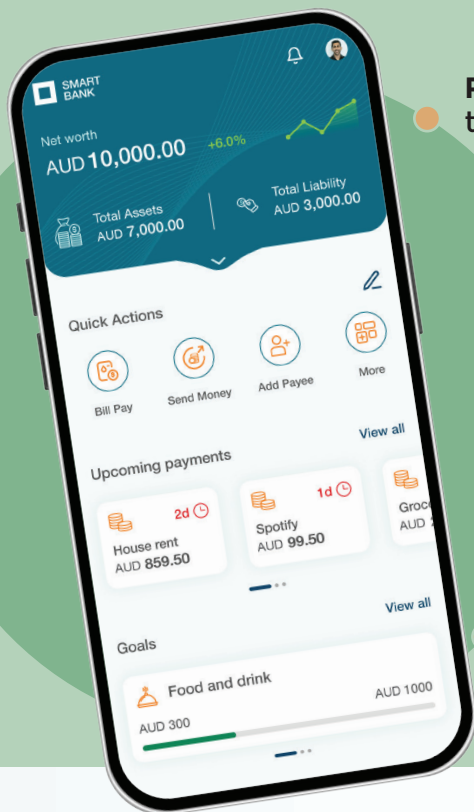
This powerful foundation enables us to deliver exceptional, personalised and seamless experiences across all member touchpoints.

We are redefining engagement and driving loyalty, innovation and growth in today's digitally connected world.

Powering digital success: The three pillars of engagement



Empowering retail members with intuitive digital experiences



Rapid onboarding powered by pre-integrated eKYC to get new members up and running faster

Personal Financial Management to help your members budget, track spending and achieve their financial goals

Family banking to empower younger members to build smart money habits early

Speed up the 'application to approval' process to just a few minutes with our **digital lending solutions**

Enhance member engagement with a **Super App** that fits their lifestyle

Enable members to **reduce carbon footprint** in one click to support sustainability efforts

Preferred partner of Canada's largest credit union



Wendy Murphy

Chief Technology Officer, Vancity

“We feel we've found the **right partner in Intellect Design Arena** and a technology partner that understands our needs and will enable us to deliver on our commitment to meet and exceed our member expectations.

Globally recognised by analysts & industry influencers



Leap into the future of engagement with Intellect

57
Countries
served

30
Years of
experience

500+
Banks, Credit Unions,
Central Banks and other
financial institutions
globally

6000+
Employees from
20+ nationalities

Global offices
Sydney, Melbourne,
New Jersey, New York,
Toronto, Santiago, London,
Madrid, Paris, Budapest,
Johannesburg, Dubai,
Singapore, Tokyo, India,
among others